



PPSA Quarterly Review

Pulp and Paper Safety Association (850) 584-1569

Special Interest Articles:

- Chairman Letter
- Winder Safety Training
- Chilworth Technology Training Course
- Member Quarterly Statistics
- Safety Recognition
- About Us

Individual Highlights:

Winder Safety Training	3
OSHA Dust Explosion Training	5
Safety Stats	7
Safety	13
Ergonomics	18
Our Sponsors	19
About our Organization	21

November 19, 2008

Fellow Members,

As we have now closed the third quarter of 2008, I would like to give you another up-date on the current status of the association. The Board of Directors has continued the recovery and improvement of the organization since experiencing setbacks resulting from the resignation of the Executive Director in February, the loss of several of our directors in the past 2 years and the current economic conditions. The following will hopefully give you some sense of the dedication that your board members have toward loss prevention for our industry and the organization:

- The Executive Committee, with support for the full board, has continued to work on developing and implementing procedures that will allow the organization to continue to run without the benefit of an Executive Director and provide effective measures for the accounting and controlling of the financial welfare of the organization. The board has explored several alternatives for the replacement of the Executive Director, such as direct replacement of the Executive Director, sharing the services of an Executive Director with another organization, or continuing to operate without an Executive Director. The decision reached at the fall board meeting was to continue to operate for the next year without the services of an Executive Director with the current duties assigned to various other board members. Though fragile, the financial stability of the association continues to grow and will be enhanced by membership renewals for 2009. I think you will all agree that our non-profit structure and minimal annual dues structure (\$100 - \$300, depending on facility size) is a real bargain and is value-added for any facility.
- Chris Redfearn, our 2009 Conference Chairman, and his committee have finalized a the agenda for the association's 66th Annual Awards and Safety Conference which is being held at the Caribe Royal in Orlando, FL. from June 14 to 17, 2009. The conference agenda and registration will soon be posted on the association's web-site, <http://www.ppsa.org>. Please remember that Orlando offers the perfect location to mix business with pleasure. This conference will feature general and break-out sessions on safety and health topics tailored to the pulp, paper converting, recycle and forest products industry. There will also be opportunities for social/networking events including a Sunday morning Golf Scramble, a Chairman's Reception and of course several vendor suites. Orlando is also the city of Disney World. There are plenty of things to see and do so plan to bring your family and make the 2009 Conference a family vacation.
- Our Educational Resources Committee lead by Pete Masias has been working hard at developing and coordinating the presentation of several new virtual and traditional seminars. As an example, Pete and his group, working with the Rite-Hite people, have finalized a webinar that focuses around loading dock safety and is being titled "Material Transfer Zone Safety". This webinar, was offered to members for \$55, \$95 for non-members, and was presented on November 17th. In addition, the committee has been working with the AF&PA and OSHA in developing a "Machine Safety and Guarding" program that has been scheduled to be part of our 2009 Annual Conference.

This quarter the association also lost, by resignation, two valued board members; Stephane Blanchette (Domtar) and Will Morgan (International Paper). On behalf the board and the membership I would like to thank each of them for their dedication and support they have given to the association and wish them the best in their future endeavors. As a result this loss and following our by-laws the board has elected Jay Vogt (International Paper) and Marty Barfield (Domtar) to the board to fill these new vacancies. On behalf of the board and the membership I would like to thank them for joining the board and look forward to working with them.

In summary and as I stated in my last letter to you, I want you to know that your board of directors are extremely proud of this organization and its contribution to promoting our industry's safety. We are cognizant of our current deficiencies and are fully committed to resolve them, as you can see from some of the activities I listed above. I would also like to take this opportunity to thank each of them for their support and work and the entire membership for the sustained support they have given to the association.

Thank You!

Ed Corlew
General Chairman



Winder Safety Training

New from the Pulp and Paper Safety Association for a Special Member Price of \$99!



The winder area presents a larger number of injury hazards than any other portion of the paper mill. The PPSA presents this new safety training aid for new and experienced workers on the winder. **This training CD is only available from the PPSA.**

The training includes:

- A master PowerPoint slide program with professional narration!
- Safety orientation and tips for the reel section, slitters, threading, roll discharge and conveyor areas of the winder.
- Links to video clip files showing moving hazard areas!
- Links to numerous accident accounts for each section of the winder!
- A hazard assessment guide sheet for each section of the winder!
- Customization possibilities to fit your mill! Program photos are easily changeable allowing you customization to your mill by substituting your own photos.
- Learning prompts with questions and answers are inserted after each training segment to assure trainee understanding!
- Review of accidental entrapment extraction methods!

Winder Safety Training Program CD

Available now:
 Non-PPSA Member Cost: \$149
 PPSA Member Cost: \$99

Name: _____

Company: _____ Title: _____

Address: _____ City: _____ State: _____

Zip: _____

Phone: _____ Fax: _____ E-mail: _____

Check Enclosed \$ _____ Request Invoice for P.O. Credit Card



Card Type: _____

Name as appears on Card: _____

Card #: _____ Expiration Date: ____/____/____

To purchase a copy of the new Winder Safety Training CD, the completed form above can be:

- Emailed to John at john.sunderland@bkitech.com; or
- Faxed to 850-584-1220; or
- Called in to 850-584-1569; or
- Remit payment to: Pulp & Paper Safety Association,
P.O. Box 531, Perry, FL 32347



Chilworth
Technology

A Professional Process Safety Firm

250 Plainsboro Rd, Bldg #7
Plainsboro, NJ 08536
Tel: 609-799-4449
Fax: 609-799-5559
Web: www.chilworth.com
email: safety@chilworth.com

CHILWORTH TECHNOLOGY, INC.

presents

A ONE-DAY TRAINING COURSE:

OSHA Dust Explosion Inspection Preparatory Training

Chilworth Technology Inc. has developed a training course specifically designed to help you prepare for a targeted OSHA dust explosion hazard inspection at your facility. The course addresses four primary focus areas including: (1) combustible dust accumulations within your facility; (2) specific plant operations that may be targeted by OSHA; (3) classification of electrical equipment and (4) the Hazardous Chemical Communication Standard requirements. The course can be designed to include information with regard to your specific processes, citations that may be issued with regard to them and remedial measures that can be employed with regard to abatement.

Course Duration

This course will be approximately 6-7 hours which includes background information on dust explosion hazard assessment and control and a tour of our laboratory facilities.

Who Should Attend

Technical and Management Personnel from the Chemical and processing industries including bulk and finished pharmaceutical, bulk and fine chemicals, detergents & soaps, petrochemicals, food and drink, plastics and rubbers, metals, textile, paper and lumber, agrochemicals and dyes and paints.

Benefits

This training will prepare the attendee for a targeted OSHA dust explosion hazard inspection at their facility. Course participants will develop a thorough understanding of the areas that OSHA will focus on in carrying out this type of inspection. Completion of the course will enable the attendees to prepare for the inspection and address any issues that may arise or to mitigate hazards that may currently exist prior to the arrival of the inspector.

For full details of the course contents and details, please see page 2 of this attachment.

Join us for our one-day training course regarding OSHA Dust Explosion Inspection Preparatory Training. Space is limited; so if you would like to register, please contact Mrs. Victoria R. Jones at 609-799-4449 or email to safety@chilworth.com.

Course fees must be received before the course commences. Course fees include continental breakfast, lunch and course notes. CANCELLATION POLICY – No refunds will be made if cancellations are made within 14 days prior to the course date; a possible credit may be arranged. Chilworth reserves the right to make last minute changes and/or cancellations.

DATE: November 18, 2008

TIME: 9:00am-4:00pm (Cont. breakfast at 8:30am)

COST: \$495.00 per person

LOCATION: Clarion Hotel Atlanta Airport
5010 Old National Highway
Atlanta, GA 30349
Tel: 404-768-9199

DATE: November 20, 2008

TIME: 9:00am-4:00pm (Cont. breakfast at 8:30am)

COST: \$495.00 per person

LOCATION: Crowne Plaza Chicago O'Hare
Hotel & Conference Center
5440 North River Rd
Rosemont, IL 60018
Tel: 847-671-6350

ISO/IEC 17025 ACCREDITED LABORATORY

Chilworth**Technology**

A Professional Process Safety Firm

ONE DAY COURSE**OSHA Dust Explosion Inspection Preparatory Training****Course Contents**

- The Dust Explosion Hazard Primer**
 - Background
 - The Fire Triangle
 - Conditions for a Dust Explosion
 - Flammability of Dusts
 - Sensitivity to Ignition
 - Explosion Severity
 - Factors Affecting Flammability
 - Establishing a Basis of Safety – An Overview
 - Elimination of Ignition Sources
 - Avoidance of Flammable Atmospheres
 - Provision Against the Consequences of Ignition
- Introduction to the Preparatory OSHA Dust Inspection Training**
 - Background Information Concerning the Recent Emphasis for Targeted Dust Explosion Hazard Inspections
 - Incident History of Dust Fires and Explosions in the Process Industry
 - The Chemical Safety Board Report
 - The OSHA National Emphasis Program
- Codes and Standards**
 - OSHA Regulations and the General Duty Clause
 - Consensus Standards – NFPA, FM, State and Local Building Codes
- Elements of a Targeted Inspection**
 - Explosion Hazards
 - Housekeeping
 - Process Equipment
 - Energy Control
 - Lock Out /Tag Out
 - Electrical Classification
 - The Hazardous Communication Standard
 - What are your Responsibilities as an Employer/Employee?
 - The Hazardous Communication Plan
 - Information and Training Requirements for Employers
 - Actual OSHA Citations Written Under the General Duty Clause
 - Examples of Citations
 - Remedial Measures to Abate Them
- What Can You do To Prepare**
 - Housekeeping Do's and Don'ts
 - Electrical Classification Schemes
 - Consensus Standards and Their Application To Your Facility
 - Dust Hazard Assessment Strategies
- Q&A and Group Discussion**

Join us for our one-day training course regarding OSHA Dust Explosion Inspection Preparatory Training. Space is limited; so if you would like to register, please contact Mrs. Victoria R. Jones at 609-799-4449 or email to safety@chilworth.com.

Paper/Tissue Mills #1				year-to-date	Total OSHA Log	LWDC	RWDC	Fatalities
COMPANY	CITY/Location Name	STATE	Hours	Cases (OSHA 300 log sum of col. G+H+I+J)	(OSHA 300 log col. H)	(OSHA log col. I)	(OSHA log col. G)	Total IR
Blue Ridge Paper	Canton	NC	1945893	18	3	7	0	1.9
GP	Rincon	GA	2100011	20	9	2	1	1.9
Weyerhaeuser	Longview	WA	755002	5	3	0	0	1.3
Weyerhaeuser	Columbus	MS	533231	1	1	0	0	0.4
			Totals	44	16	9	1	
Weighted Average for Category								1.6

Paper Mills #2				year-to-date	Total OSHA Log	LWDC	RWDC	Fatalities
COMPANY	CITY/Location Name	STATE	Hours	Cases (OSHA 300 log sum of col. G+H+I+J)	(OSHA 300 log col. H)	(OSHA log col. I)	(OSHA log col. G)	Total IR
Boise	DeRidder	LA	6375725	0	0	0	0	0.0
Temple Inland	Orange	TX	615,104	0	0	0	0	0.0
SSC	Florence	SC	765,467	4	1	1	0	1.0
Temple Inland	Rome	GA	745,605	5	2	0	0	1.3
Weyerhaeuser	Norpac		721,131	5	0	0	0	1.4
Boise	Jackson	AL	763382	6	3	2	0	1.6
GP	Brewton	AL	763056	6	1	1	0	1.6
Temple Inland	Bogalusa Mill	LA	737,651	6	6	0	0	1.6
Abitibi-Bowater	Calhoun	TN	1376510	14	1	4	0	2.0
			Totals	46	14	8	0	
Weighted Average for Category								0.7

Paper Mills #3				year-to-date	Total OSHA Log	LWDC	RWDC	Fatalities
COMPANY	CITY/Location Name	STATE	Hours	Cases (OSHA 300 log sum of col. G+H+I+J)	(OSHA 300 log col. H)	(OSHA log col. I)	(OSHA log col. G)	Total IR
SSC	Coshocton	OH	348009	0	0	0	0	0.0
Mohawk	Beckett	OH	265659	3	0	0	0	0.0
SSC	Uncasville	CT	160006	0	0	0	0	0.0
Temple Inland	New Johnsonville	TN	294,699	1	0	1	0	0.7
Domtar	Bennettsville	SC	519415	3	0	3	0	1.2
Mohawk	Cohoes	NY	412247	4	0	0	0	1.9
PCA	Tomahawk	WI	638271	7	2	0	3	2.2
Interstate Paper	Riceboro	GA	398887	6	0	0	0	3.0
New Page	Stevens Point	WI	433673	8	0	3	0	3.7
Mohawk	Waterford	NY	221251	5	1	1	0	4.5
Green Bay Packaging	Arkansas Kraft	AR	576908	20	2	8	0	6.9
			Totals	56	5	15	3	
Weighted Average for Category								2.7

Sheet Feeders				year-to-date					Total OSHA Log	LWDC	RWDC	Fatalities
COMPANY	CITY/Location Name	STATE	Hours	Cases (OSHA 300 log sum of col. G+H+I+J)	(OSHA 300 log col. H)	(OSHA log col. I)	(OSHA log col. G)	Total IR				
Temple Inland	Midwest Sheets	IN	151,907	1	0	0	0	1.3				
Temple Inland	Gilroy (Bay Sheets)	CA	139,502	1	0	1	0	1.4				
Temple Inland	Gateway Sheets	MO	114,026	4	3	1	0	7.0				
Temple Inland	San Antonio (Texas Sheets)	TX	121,910	5	0	0	0	8.2				
		Totals	527,344	11	3	2	0					
Weighted Average for Category								4.2				

Specialty				year-to-date					Total OSHA Log	LWDC	RWDC	Fatalities
COMPANY	CITY/Location Name	STATE	Hours	Cases (OSHA 300 log sum of col. G+H+I+J)	(OSHA 300 log col. H)	(OSHA log col. I)	(OSHA log col. G)	Total IR				
Temple Inland	Graphics Resource Center	IN	121,626	0	0	0	0	0.0				
Weyerhaeuser	Columbus Modified Fiber		148,327	1	0	0	0	1.3				
Green Bay Packaging	Winchester - Coated Prod.	VA	116,130	2	0	0	0	3.4				
Mohawk	Ashtabula	OH	164,671	3	0	0	0	3.6				
Mohawk	Cohoes	NY	52,519	1	0	0	0	3.8				
Green Bay Packaging	Green Bay - Coated Prod.	WI	412,333	9	1	4	0	4.4				
		Totals	1,015,606	16	1	4	0					
Weighted Average for Category								3.2				

Wood Products				year-to-date					Total OSHA Log	LWDC	RWDC	Fatalities
COMPANY	CITY/Location Name	STATE	Hours	Cases (OSHA 300 log sum of col. G+H+I+J)	(OSHA 300 log col. H)	(OSHA log col. I)	(OSHA log col. G)	Total IR				
Temple Inland	Cumberland City	TN	206316.25	0	0	0	0	0.0				
Temple Inland	Diboll Fiber Proc.	TX	204308.02	0	0	0	0	0.0				
Temple Inland	Diboll Particleboard	TX	37633.25	0	0	0	0	0.0				
Temple Inland	Fredericksburg	VA	21165.25	0	0	0	0	0.0				
Temple Inland	McQueeney	TX	102996.75	0	0	0	0	0.0				
Temple Inland	Thomson	GA	158569.5	1	1	0	0	1.3				
Temple Inland	Hope	AK	175895.4	2	0	1	0	2.3				
Temple Inland	West Memphis	AR	61754.75	1	0	0	0	3.2				
Temple Inland	Fletcher	OK	155476	3	0	1	0	3.9				
Temple Inland	Monroeville	AL	166521.75	4	1	0	0	4.8				
		Totals	1,290,637	11	2	2	0					
Weighted Average for Category								1.7				

Woodlands				year-to-date					Total OSHA Log	LWDC	RWDC	Fatalities
COMPANY	CITY/Location Name	STATE	Hours	Cases (OSHA 300 log sum of col. G+H+I+J)	(OSHA 300 log col. H)	(OSHA log col. I)	(OSHA log col. G)	Total IR				
Green Bay Packaging	Fiber Resources	AR	50,897	1	0	1	0	3.9				

*Complete survey results can be viewed on the www.ppsa.org website

Safety Recognition



Temple-Inland's Orange Mill Celebrates 2 Million Safe Hours without a Lost Work Case

On October 5, 2008 the Orange Texas mill celebrated 2 million safe hours without an OSHA recordable case involving days away from work. This 2 million safe hour accomplishment has spanned more than 2 years with the mill's last LWC event occurring on May 5, 2006. Mill celebration activities included the mill staff grilling steaks on site for all employees, tee-shirts commemorating the event, as well as all employees receiving \$50.00 gift certificates.

* * * * *

Boise, Inc. Paper Mill at DeRidder, Louisiana

for completing 6,375,725 hours (and counting)
without a Day-Away-From-Work incident
through the 3rd quarter of 2008.

* * * * *

Georgia Pacific Tissue Mill at Rincon, Georgia

For completing over 147,000 (and counting)
without a Day-Away-From-Work incident
during the 3rd quarter of 2008.



Back Up Plan

When you shift your car's transmission to "R," it should stand for "Reminder."

Last May, after dropping off supplies at a job trailer in a Weyerhaeuser Real Estate Quadrant Homes community, a contractor backed his 4x4 pickup away from the door. As he slowly reversed his vehicle, he heard a child screaming and jerked to a stop. He turned off the ignition and jumped out. In front of the truck lay an 18-month-old girl who'd apparently been knocked down and backed over. Fortunately, she was clear of the tires during the ordeal.

The toddler had received only bumps and scratches, but the contractor called out for help. An 11-year-old sister ran from the house across the street and snatched the younger child. The superintendent and construction director, who heard the commotion from the trailer, immediately dialed 911 and requested assistance. A medic unit arrived and took the child to a nearby hospital, where she was checked out and eventually released to her parents.

"This is a very serious incident," says Peter Orser, president of Quadrant Homes, a Weyerhaeuser Real Estate Company subsidiary. "Thankfully, a tragedy was avoided, but we're treating it with a lot more focus than a typical near miss. It was a wake-up call to take some aggressive measures around vehicle safety."

Quadrant staff immediately sat down with the vendor partner involved in the incident. They discussed the urgency of preventing similar occurrences. They also held an emergency superintendent meeting to spread the word throughout Quadrant's building sites. And discussion of the incident figured prominently in the following Thursday's tailgate meetings with contractors as well as in every office and department meeting throughout the company.

"The contractor who backed over the little girl was understandably shaken," says Jeret Whitescarver, Quadrant's safety coordinator. "It was scary enough that we wanted to take immediate action on something people often take for granted."

Wherever possible, back-in parking is now mandated at Quadrant building sites. The re-evaluated safety policy requires a 360-degree walk-around before moving any vehicle (if a spotter isn't available). Strict parking rules minimize vehicle traffic in construction zones, and all job trailers have been strategically placed for the safety of occupied-housing areas.

"We've also incorporated the incident into our defensive driving training," says Whitescarver.

Quadrant then took the extraordinary step of rethinking the sequence in which it releases land in any new development.

"We used to scatter our released lots throughout a development," Whitescarver says. "Now we group the releases so all homes in an area are completed at about the same time. That way, there isn't a lot of construction going on around occupied homes."

Quadrant's contractors were quick to incorporate these changes too. One went so far as to install backup alarms on personal vehicles as well as the firm's construction vehicles.

"We had a good, thorough program before," says Whitescarver. "Now we have one of the most comprehensive."

Baler Accident

Safety Communication

Accident Details:

A baler room operator received lacerations to his fingers. The operator's fingers were caught in the inserter and twisters of the baler.



Investigation Findings:

The baler room operator noticed that a bale wire was not tying correctly. The inserter had come out and cut the wire but had failed to twist the wire correctly. The operator opened the panel to the inserter and twisters and tried to twist the wire himself. The machine cycled which made the inserter come forward and the twisters to start twisting. The inserter then caught the operator's fingers and pulled them into the baler. The wire then twisted and wrapped around the fingers. The incident resulted in lacerations to the middle and index fingers of his right hand. The operator was transported to the emergency room where he received 16 sutures to the middle finger and 6 sutures to the index finger. A thorough accident investigation was completed. The investigation revealed this accident to be a LOTO violation. The operator admits to knowing that the baler should have been in a zero energy state before opening the access panel to the inserters and twisters. The access panel is labeled accordingly.



Corrective Action(s):

1. Communicate to baler room operators the circumstance of this accident and the seriousness of not following lockout procedures
2. Discipline employee
3. Troubleshoot and repair the baler so it operates and ties correctly.

Safety Alert

Date of Accident: 08/06/2008

Time of Accident: 8:10 p.m.

Unit Involved: Clamp Truck

Description of Incident: employee was loading scrap butt rolls into a trailer with a clamp truck. The employee got off of the clamp truck to straighten a roll when he heard a “crack” and the clamp truck went through the floor of the trailer. Employee was not injured and the clamp truck was not damaged, however, the trailer sustained substantial damage.

Corrective actions: only trailers less than 10 years old will be loaded with scrap butt rolls (the trailer involved in this incident was 20 years old). Employees are to inspect the trailers prior to entering and reject those with visible signs of damage.



Related Note: Inquire @ (850) 584-1569 for PPSA's "Truck Trailer Loading/Unloading Safety" Video.

Safety Alert Safety Alert Safety Alert

Incident Description: Employee fell off a wooden step and suffered a minor injury.

Details: The Step had been previously struck and broken, possibly by a forklift. The person responsible, instead of reporting it so that it could be repaired, chose to reposition the damaged piece back on the step so it did not appear to be broken – thus creating an unsafe condition. We are extremely fortunate that the person who stepped on this was not seriously hurt when he fell back.

Reporting unsafe conditions is everyone's responsibility. Do the right thing. Don't let an unsafe condition exist, as it could result in a serious injury to yourself or a co-worker.



Broken piece

Eye on Ergonomics




Industrial Vehicle Ergo

Driving's Impact

Most of us don't think that operating mobile equipment would be hazardous to our health but think...

- After a long drive on your vacation – are your neck and shoulders stiff or sore as soon as you get out of the vehicle?
- Do you find yourself exhausted after driving all day?

It's important to accept that the awkward postures, vibration and repetitive nature of mobile equipment operation can easily result in the development of musculoskeletal symptoms. Mobile equipment operators most commonly experience the early signs and symptoms of musculoskeletal injury in the neck, shoulders, upper and lower back and the forearms. Left unchecked, these can progress to the point of severe pain, reduced movement and eventually the inability to work or play (e.g. tennis elbow, sciatica or disc injuries).



Why is it that when a **warning light** comes on in your machine, you will immediately pick up the phone and call your mechanic but won't do the same when **your** warning lights come on? Discomfort, pain, numbness, tingling, and reduced movement are some of our body's warning lights. Putting your hand up early and getting help on (supervisor, safety) or off the job (family physician, physical therapist), will help ensure that your symptoms are temporary and that your wheels will keep on turning for years to come.

For additional tips and information on *Industrial Toolbox Talks* click on the following link:

[Take Responsibility \(http://ergorisk.com/index.php?option=com_content&task=category§ionid=1&id=26&Itemid=54\)](http://ergorisk.com/index.php?option=com_content&task=category§ionid=1&id=26&Itemid=54)

Information brought to you by David Coates
ErgoRisk Management Group

Excellence | Growth | Durability | Passion

Our Sponsors



Leading the Industry with Environmental, Health, & Safety Training

SUMMIT TRAINING SOURCE

Your Complete Resource!

The Pulp and Paper industry is one of the most hazardous industries to work in and employee training is essential to avoid accidents and injuries that hurt employee morale and slow production. Summit offers training programs on over 100 compliance issues, including PPE, Respiratory Protection, Industrial Equipment, Hazard Communication, and much more!

Summit programs are the most technically accurate and comprehensive programs, meeting compliance and regulatory needs, while reducing costs and motivating your employees!

Whatever the training need, Summit has the solution!

Call or visit us online to learn more about Summit's extensive library of learning solutions in Video/DVD, online, and print.

800-842-0466 | www.safetynthevcb.com

Safety and Energy Savings Solutions at your dock and door openings




Vehicle Restraints
The most effective way to prevent accidents caused by trailer separation and vertical or horizontal movement.

Smooth Transition Dock Levelers

Revolution Fans
An industrial ceiling fan that helps drive down energy costs while improving employee comfort.

Frontroll Seals and Shelters
with the new PikaMaster under-vehicle seal for maximum energy savings

Rite-Hite Industrial Fast Track Doors
The safest, most efficient and most reliable high speed doors in the industry.

Barrier Systems
Discover new cost-effective solutions to help keep your people safe and reduce equipment and product damage.

Contact Dan Quarles, VP Sales - Paper Industry Specialist
dquarles@ritehite.com 727-644-2258 800-456-0600

RITE-HITE CORPORATION
8800 N Arbon Drive • Milwaukee, WI 53223 • 800-456-0600 • www.ritehite.com

EMERGENCY RESPONSE TRAINING & EQUIPMENT SALES



Emergency Response Services, Inc.

**Eddie Sisco
Ralph Johnson
Shane Jenkins**

**SAVE LIVES.
SAVE MONEY.
SAVE JOBS.**

- Structural & Incident Fire Brigade
- Hazardous Materials Emergency Response
- Confined Space & High Angle Rescue
- Incident Command
- Oil Spill (SPCC)
- Standby Confined Space Rescue Teams
- Equipment Sales



Industrial Firefighting Training



Hazardous Materials Training



Confined Space Rescue Training

National Fire Protection Association
The authority on fire, electrical & building safety

Emergency Response Services, Inc.
PO Box 680618 • Fort Payne, AL 35968
(256) 997-9087 • FAX: (256) 997-9041

www.erstraining.com

Make Your Operations Safer and More Productive

#1 Solution for Moving Heavy Loads
Without Risking Personal Injury

RollMover™

If it rolls, our powerful movers can move it... safely, effortlessly, and without power cords or hoses.

- Ideal for large rolls, reels, carts, vehicles
- Moves loads in excess of 10,000 lbs.
- Long-lasting rechargeable battery packs
- Battery charge-out takes only seconds
- Lightweight, maneuverable and powerful productivity and worker safety.

Our powerful movers are battery powered. Tether-free operation encourages high lifts, lifts, increasing productivity and worker safety.



Appleton
PRODUCTIVE SOLUTIONS, INC.
www.appletonmfg.com 800-531-2002

Avoid the safety risks common to other power pushers

#1 in Core Cutting Versatility

Take your operation to the next level with automated core cutting.

- Save space devoted to pre-cut inventories
- Save time wasted on wrong sized pre-cuts
- Create perfect cores in seconds as needed
- Reduce labor costs with automated features
- Keep workers safe and productive
- Reduce pre-cut inventory waste and scrap
- Durable and robust - built to last

50 years of core cutter excellence... with technical support and service for every Appleton Core Cutter ever made!



Appleton
PRODUCTIVE SOLUTIONS, INC.
www.appletonmfg.com 800-531-2002



Reichle Associates

PRACTICAL SOLUTIONS TO PREVENT FALLS FROM HEIGHTS

Bill Reichle Associates, LLC is a total Fall Hazard Solutions Provider specializing in engineered solutions for fall hazard risks. The following are some of our engineered solutions:

- Anchor Points
- Guardrail Systems
- Horizontal Lifelines
- Process Equipment Design Modifications
- Elevated Work Platforms
- Access Ladders

Our team of professionals, including Structural/Professional Engineers, works with your Safety and Facilities personnel to prioritize potential fall hazards, design and implement the remediation solutions to ensure a safer work environment and limit your liability exposure.

TYPICAL CLIENT APPLICATIONS:

- Rooftops
- Process Equipment
- Mezzanines/Catwalks
- Ladder Access
- Interstitial Areas
- Truck/Railcar Loading
- Aircraft Maintenance

WE OFFER:

- Facility-wide Fall Hazard Risk Assessments
- Engineering & Design of Fall Protection Systems
- Structural Analysis
- Fabrication and Installation of Engineered Solutions
- Fall Hazard Awareness Training
- Annual Safety Inspections of Fall Protection Systems
- Evaluation of Fall Protection Programs/ Best Practices
- Pre/Post Safety Audit Consultation

Ph: 610.793.0137
F: 610.793.0138
bill@reichleassoc.com
www.reichleassoc.com




FALL HAZARD RISK CONSULTANTS



BRADY®

WHEN PERFORMANCE MATTERS MOST™



Castell

The Future of Safety is Here



ISNetworld



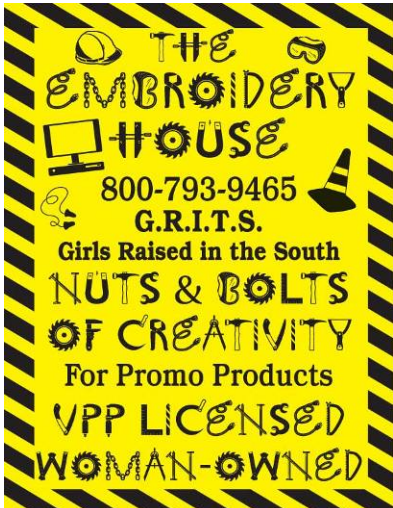
HEXARMOR®

PERSONAL PROTECTIVE ARMOR™



SAC

ENVIRONMENTAL



THE EMBROIDERY HOUSE

800-793-9465
G.R.I.T.S.
 Girls Raised in the South
NUTS & BOLTS OF CREATIVITY
 For Promo Products
VPP LICENSED
WOMAN-OWNED

Pulp and Paper Safety Association

P.O. Box 531
Perry, FL 32348

PHONE:
(850) 584-1569

Contact:
John Sunderland
Secretary/Treasurer

John.Sunderland@BKITECH.com

We're on the Web!

See us at:
www.ppsa.org

About our Organization

Membership Information

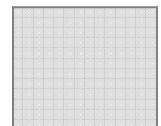
Membership in the Association is by operating facility, such as a paper mill, sawmill, woodlands, etc. Approximately 380 operating facilities are currently members. Annual Membership is based on employee numbers. 1-50 employees is \$100, 51-100 employees is \$150, 101-200 employees is \$200, 201-500 is \$250 and 501 and up is \$300. Please remember that each location must have its own membership. We do not have any corporate members. Vendors are \$200

Membership in the Association has many advantages:

- Participation in the Annual Health and Safety Conference and service as a member of the Board of Directors provides an opportunity for personal and professional growth.
- The Pulp and Paper Safety Association is the ONLY national organization exclusively concerned with accident prevention in the pulp, paper, converting, recycle and forest product industry.
- The annual Conference provides great face-to-face networking opportunities.
- The Quarterly Report provides a way of bench-marking your own performance with others in similar operations.
- The Awards program provides a prestigious form of recognition to outstanding short-term and long-term safety performance by operating categories.
- The Association is an excellent forum for keeping up with latest OSHA standards.
- In-depth information on specific subjects is increasingly available at regional seminars. The cost of these seminars is minimized by virtue of holding them on a regional basis.
- The annual conference provides a fine external motivational boost to hourly Safety Committee members as recognition for their active participation in your safety program.
- The cost of membership is the lowest of any association to our knowledge.
- The attendance of vendors at our annual conference allows safety people to keep up with the latest safety equipment, tools and training.

Visit our website to complete the Application / Renewal Form

**PULP AND PAPER
SAFETY
ASSOCIATION**
P.O. Box 531
Perry, FL 32348



**PULP AND PAPER SAFETY ASSOCIATION
PERRY, FL 32348**